

Injection Date : Fri, 20. Oct. 2023 Seq Line : 5
Location : 27
Inj. Vol. : 2 µl

Acq. Method : C:\Users\Public\Documents\ChemStation\1\Data\SE20OCT 2023-10-20
14-51-25\22010446C LCMS-6#.M

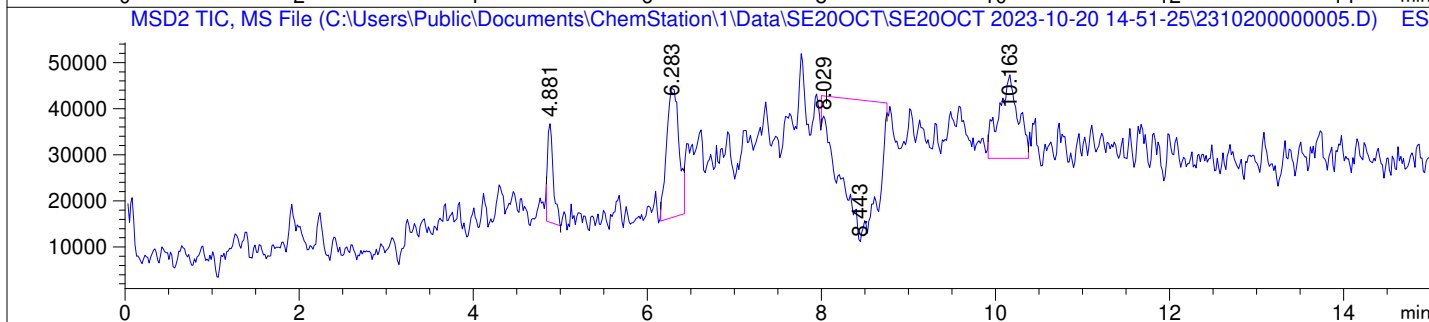
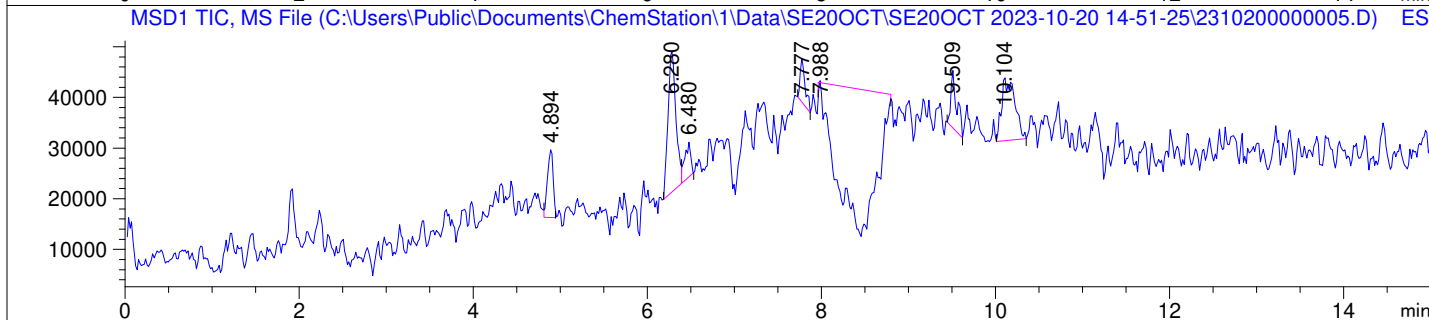
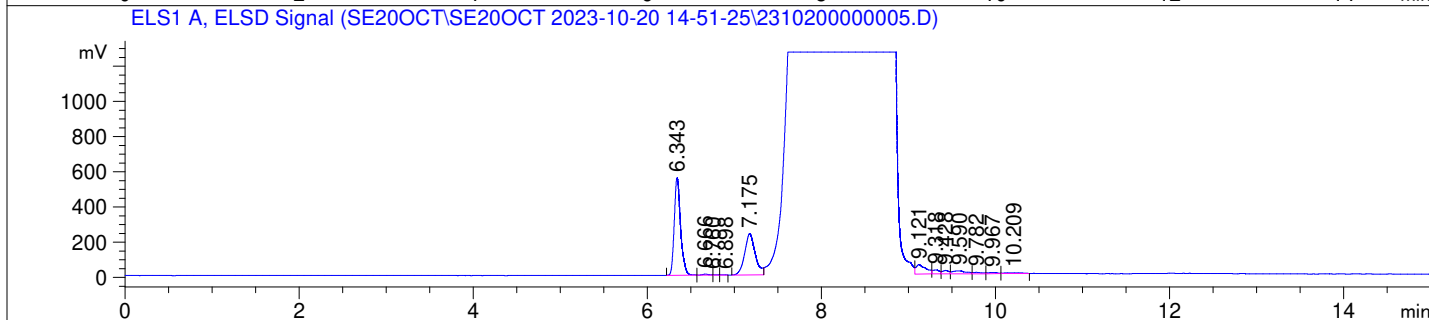
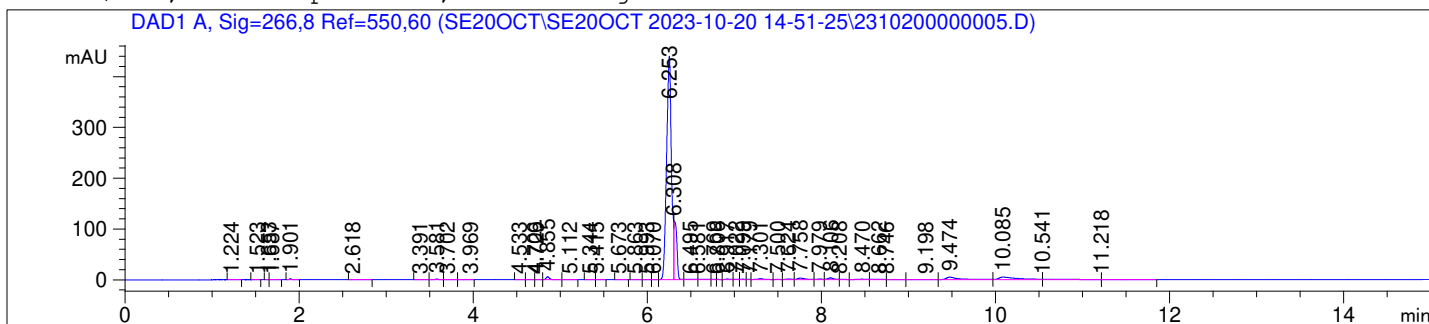
Analysis Method : C:\Users\Public\Documents\ChemStation\1\Data\SE20OCT\SE20OCT
2023-10-20 14-51-25\22010446C LCMS-6#.M (Sequence Method)

Waters XBridge BEH Amide (4.6 x 150 mm, 2.5 µm); PN# 186006726

Mobile Phase A: 20mM Ammonium Acetate (aq) pH 8.2

Mobile Phase B: AcN

Mobile Phase A / Mobile Phase B: 5/95 (0 min) --> (10 min) --> 60/40 (5 min); Flow:
1.0 ml/min; MSD1 = positive; MSD2 = negative



DAD1 A, Sig=266,8 Ref=550,60

Peak #	Ret. Time [min]	Area [mV *s]	Area %
1	1.224	0.304	0.013
2	1.523	0.145	0.006
3	1.653	0.223	0.010
4	1.687	1.100	0.049
5	1.901	3.494	0.154
6	2.618	0.261	0.011
7	3.391	0.238	0.011
8	3.581	3.298	0.145
9	3.702	0.213	0.009
10	3.969	0.213	0.009
11	4.533	0.265	0.012
12	4.706	0.176	0.008
13	4.729	0.338	0.015
14	4.855	15.903	0.701
15	5.112	0.263	0.012
16	5.344	0.468	0.021
17	5.415	0.169	0.007
18	5.673	0.186	0.008
19	5.863	0.517	0.023
20	5.993	0.683	0.030
21	6.070	0.455	0.020
22	6.253	1721.817	75.886
23	6.308	248.645	10.959
24	6.495	6.342	0.279
25	6.581	4.599	0.203
26	6.769	1.511	0.067
27	6.806	1.460	0.064
28	6.917	5.654	0.249
29	7.022	2.626	0.116
30	7.099	3.439	0.152
31	7.179	2.350	0.104
32	7.301	11.410	0.503
33	7.500	2.509	0.111
34	7.624	6.632	0.292
35	7.758	20.197	0.890
36	7.979	6.495	0.286
37	8.106	17.333	0.764
38	8.208	2.663	0.117
39	8.470	8.588	0.378
40	8.662	7.809	0.344
41	8.746	2.855	0.126
42	9.198	4.912	0.216
43	9.474	54.914	2.420
44	10.085	75.423	3.324
45	10.541	17.521	0.772
46	11.218	2.340	0.103

ELS1 A, ELSD Signal

Peak #	Ret. Time [min]	Area [mV *s]	Area %
1	6.343	2796.746	47.978
2	6.666	30.365	0.521

Data -> C:\Users\Public\Documents\ChemStation\1\Data\SE20OCT\SE20OCT 2023-10-20 14-51-->
Sample-> CPT22010446-19-A

Peak #	Ret. Time [min]	Area [mV *s]	Area %
3	6.760	6.212	0.107
4	6.898	4.143	0.071
5	7.175	1981.436	33.992
6	9.121	430.164	7.379
7	9.318	124.883	2.142
8	9.428	101.241	1.737
9	9.590	183.383	3.146
10	9.782	57.358	0.984
11	9.967	50.664	0.869
12	10.209	62.595	1.074

